



Universidade do Minho

Documentos de Trabalho
Working Paper Series

**“Assessing Long-Term Fiscal Developments:
Evidence from Portugal”**

António Afonso
Ricardo M. Sousa

NIPE WP 1 / 2009

NÚCLEO DE INVESTIGAÇÃO EM POLÍTICAS ECONÓMICAS
UNIVERSIDADE DO MINHO

“Assessing Long-Term Fiscal Developments: Evidence from Portugal”

António Afonso

Ricardo M. Sousa

NIPE^{*} WP 1 / 2009

URL:

<http://www.eeg.uminho.pt/economia/nipe>

* NIPE – *Núcleo de Investigação em Políticas Económicas* – is supported by the Portuguese Foundation for Science and Technology through the *Programa Operacional Ciência, Tecnologia e Inovação* (POCI 2010) of the *Quadro Comunitário de Apoio III*, which is financed by FEDER and Portuguese funds.

Assessing Long-Term Fiscal Developments: Evidence from Portugal^{*}

António Afonso[#] Ricardo M. Sousa^{\$}

January 2009

Abstract

Drawing on quarterly data for Portugal, we use a Three-Stage Least Square method and a system of equations to recursively estimate two components of fiscal policy – responsiveness and persistence – and to infer about the sources of fiscal deterioration (improvement). The results suggest that: (i) government spending exhibits higher persistence than government revenue; and (ii) government revenue is more responsive to the business cycle than government spending.

Keywords: Fiscal deterioration, Portugal.

JEL classification: E62, H50.

^{*} The opinions expressed herein are those of the authors and do not necessarily reflect those of the ECB or the Eurosystem.

[#] European Central Bank, Directorate General Economics, Kaiserstraße 29, D-60311 Frankfurt am Main, Germany. ISEG/TULisbon - Technical University of Lisbon, Department of Economics; UECE – Research Unit on Complexity and Economics; R. Miguel Lupi 20, 1249-078 Lisbon, Portugal. UECE is supported by FCT (Fundação para a Ciência e a Tecnologia, Portugal), financed by ERDF and Portuguese funds. Emails: antonio.afonso@ecb.europa.eu, aafonso@iseg.utl.pt.

^{\$} University of Minho, Department of Economics and Economic Policies Research Unit (NIPE), Campus of Gualtar, 4710-057 - Braga, Portugal; London School of Economics, Department of Economics and Financial Markets Group (FMG), Houghton Street, London WC2 2AE, United Kingdom. E-mails: rjsousa@eeg.uminho.pt, r.j.sousa@lse.ac.uk.

1. Introduction

Public spending control has been a problem in Portugal, with significant increases in primary spending in the last two decades. Indeed, the gains obtained from the reduction in the interest payments on government debt, were mostly used to increase public spending, and seldom seen as a window of opportunity to consolidate public finances. Therefore, it seems fair to say that after entering the European Union (EU) in 1986, and adhering to the European and Monetary Union in 1999, Portugal's track record in implementing fiscal policy could have been more ambitious. Portugal was the first EU country to breach the Stability and Growth Pact in 2002, becoming subject to the Excessive Deficit Procedure, a situation that occurred again in 2005.

Studies addressing the issue of the sustainability of public finances usually test whether government spending and government revenue display a fiscal sustainable "equilibrium" pattern. In fact, any inadequate fiscal policy may lead to potential "fiscal deterioration" and, therefore, to the lack of public finances sustainability.

In this paper, we follow Afonso et al. (2008b) and examine the role of two major characteristics of fiscal policy behaviour in allowing one to infer about the conditions of fiscal sustainability or fiscal deterioration: i) responsiveness, that is, the sensitivity of fiscal variables to economic developments; and ii) persistence, that is, dependence of fiscal behaviour on its own past developments.

We depart notably from Fatas and Mihov (2003) and Afonso et al. (2008a) in that we aim at testing whether time-varying behaviour of the fiscal policy characteristics can simultaneously influence the conditions of fiscal deterioration. As a result, we estimate a system that includes both the expenditure and revenue equations, drawing upon quarterly fiscal data.

The results suggest that fiscal deterioration has been a major characteristic of public finances in Portugal, reflected in the consecutive budget deficits and the rise of the debt-to-GDP ratio. The higher persistence of government spending relative to government revenue has been the major determinant of the fiscal deterioration. Moreover, although government revenue has typically been more responsive than government spending, it has not been sufficient to change the path of deterioration in public finances.

The paper is organized as follows. Section 2 briefly reviews the related literature. Section 3 presents the empirical methodology. Section 4 describes the data and presents and discusses the empirical results. Section 5 concludes.

2. Related literature

The sustainability of public finances has been commonly assessed via unit root and cointegration tests, by checking whether the first differences of the debt series are stationary or whether government spending and revenue are co-integrated. The rejection of these tests is typically interpreted as evidence against of either strong or weak fiscal sustainability.

While such analysis has been carried out on a country basis (Hamilton and Flavin, 1986; Trehan and Walsh, 1991; Ahmed and Rogers, 1995; Quintos, 1995), fiscal developments have also been assessed for OECD and EU country groupings with panel unit root and cointegration tests (Afonso and Rault, 2007).

Despite its intuitive application, some authors have argued that the rejection of sustainability based on standard cointegration tests is invalid because the present-value borrowing constraint could be satisfied even when deficit and debt are difference-stationary or when government spending and revenue are not cointegrated (Bohn, 2007).

In light of these criticisms, this work uses a new approach developed by Afonso et al. (2008b) to assess fiscal deterioration or fiscal improvement for Portugal. It looks at how fiscal policy characteristics affect both government spending and revenue and emphasizes their time-varying and interplay nature. It also improves upon the work of Afonso et al. (2008a) who extend the analysis of Fatás and Mihov (2006) by using instrumental variables method (IV), but estimate, separately, the equations for government expenditure and revenue.

3. Methodology

The empirical methodology used to analyze the role of responsiveness and persistence in determining conditions of potential fiscal deterioration is based on the recursive estimation of the following system of structural equations:

$$\begin{cases} \log(G_t) = \alpha_k^G + \beta_k^G \log(Y_t) + \gamma_k^G \log(G_{t-1}) + \varepsilon_{k,t}^G & (t=1, 2, \dots, T) \\ \log(R_t) = \alpha_k^R + \beta_k^R \log(Y_t) + \gamma_k^R \log(R_{t-1}) + \varepsilon_{k,t}^R & (t=1, 2, \dots, T) \end{cases} \quad (1)$$

where G is real government spending, R is real government revenue and Y is real GDP. The coefficient β_k measures the responsiveness of fiscal policy for each sample of length k

(where $k = \bar{k} + h$ and $h = 1, 2, \dots, T - \bar{k}$),¹ that is, the behaviour of fiscal policy over the business cycle. By its turn, the coefficient γ_k represents a measure of fiscal persistence, i.e. the degree of dependence of the current fiscal behaviour from its own past setting.

Moreover, it is necessary to include the level of the current and lagged value of government spending and revenue in the regressions in order to capture the persistence of fiscal policy.

The estimation of system (1) is diffculted by the presence of lagged endogenous variables among the explanatory variables. Consequently, we use a Three-Stage Least Square (TSLS) method (Zellner and Theil, 1962), which insures consistent estimates. Moreover, in order avoid any endogeneity bias due to the simultaneity in the determination of output, government spending and revenue, current GDP (Y) is instrumented with two lags of GDP, the index of oil prices (as in Fatás and Mihov, 2006), and the lagged value for revenue and spending, respectively in the spending and revenue equation.

Once system (1) is recursively estimated and each of the $(T - \bar{k} + 1)$ sets of parameters estimates (i.e. one set for each sample period) is stored, we compute the corresponding Wald-statistics and test the following joint restrictions:

$$H_0 : \gamma_k^G = \gamma_k^R \wedge \beta_k^G = \beta_k^R. \quad (2)$$

When the null hypothesis is accepted, we conclude that the behaviour of both government spending and revenues evolve dynamically in a way that avoids any structural change of the fiscal position. On the contrary, rejection of the null hypothesis signals a deterioration or improvement in fiscal behaviour. In order to discriminate between these two cases and to assess whether changes in the fiscal position are due to different responsiveness or persistence, we test the following single hypothesis:

$$H_0 : \gamma_k^G = \gamma_k^R \quad H_1 : \gamma_k^G \neq \gamma_k^R \quad (3)$$

$$H_0 : \beta_k^G = \beta_k^R \quad H_1 : \beta_k^G \neq \beta_k^R. \quad (4)$$

Therefore, one can obtain three possible outcomes: i) fiscal deterioration (due to fiscal persistence and/or to fiscal responsiveness); ii) fiscal improvement (due to persistence and/or responsiveness); iii) indeterminacy, when government spending

¹ \bar{k} is the length of the sample window used to initialize the recursive estimation procedure, and we set $\bar{k} = 60$ quarters.

persistence is bigger than revenue persistence ($\gamma_k^G > \gamma_k^R$), but spending responsiveness is lower than revenue responsiveness ($\beta_k^G < \beta_k^R$), and vice versa ($\gamma_k^G < \gamma_k^R$; $\beta_k^G > \beta_k^R$).

4. Empirical Analysis

4.1. Data

We use quarterly data for Portugal covering the period 1978:1-2007:4.² National currency data for all years prior to the switch to the euro have been converted using the fixed euro conversion rate in order to provide comparable series across time. All variables are seasonally adjusted and are expressed in natural logarithms of real terms.

For the government finance statistics – that is, government spending and government revenue –, we use budgetary data on a cash basis. It refers to the Central Government, therefore, with the exclusion of the Local and/or the Regional Authorities. The data is typically disseminated through the monthly publications of the Ministry of Finance and the Bank of Portugal. The latest figures are also published in the Special Data Dissemination Standard (SDDS) section of the International Monetary Fund website.

The gain of using high frequency fiscal data is paramount vis-à-vis the absence of quarterly data for the general government. In fact, the patterns of the infra-annual budgetary cash data are quite similar to the ones found for the annual national accounts data provided by the European Commission (AMECO database), which is in accordance to the findings of Afonso and Sousa (2009) for several OECD countries.

For GDP and GDP deflator, we use the Long Series from the Bank of Portugal.

4.2. Results and Discussion

Figures 1a and 1b present the recursive estimates of the measures of persistence and responsiveness for government spending and revenue, while Figure 1c summarizes the results of the Wald test of the joint hypothesis (of equality) in the parameters. Finally, Figure 1d shows how the budget balance (in percentage of GDP) and the debt-to-GDP ratio have evolved over time.

Figure 1a shows that the estimates of persistence for government spending are larger than the ones for government revenue. Note, however, that the Wald tests indicate that the discrepancy in the behaviour of government spending and revenue is not

² Other papers that also use higher frequency data, either quarterly or monthly, are, MacDonald (1992), Quintos (1995) for the US, Smith and Zin (1991) for Canada, and Baglioni and Cherubini (1993) for Italy. Afonso (2005) provides a broad review of the empirical evidence.

significant for most of the sample windows. In contrast, the responsiveness is larger for government revenue than government spending (Figure 1b). Moreover, as suggested by the Wald tests, the difference in the estimates is highly significant.

These results are in line with the empirical evidence reported in Figure 1d which shows that Portugal has been characterized by fiscal deterioration – summarized by consecutive budget deficits and a substantial rise of debt-to-GDP ratio – roughly since 1974.

Our analysis suggests that this path for public finances has mainly been driven by the higher persistence of government spending relative to revenue.

Finally, Table 1 summarises the recursive estimates for several sub-periods, notably before and after the Euro adoption. It shows that the responsiveness of both government spending and revenue has fallen over time. In contrast, while the persistence of spending has remained roughly unchanged, the persistence of government revenue slightly increased over time. Moreover, the fiscal policy characteristics did not seem to change at the time of the Euro adoption.

Table 1 – Recursive window estimates for responsiveness and persistence

Responsiveness		Persistence		Wald tests		
$\hat{\beta}^G$	$\hat{\beta}^R$	$\hat{\gamma}^G$	$\hat{\gamma}^R$	W_{β}	W_{γ}	W_{joint}
First 60 quarters						
0.36***	0.66***	0.69***	0.53***	2.61	1.68	3.09
Full sample						
0.29***	0.53***	0.68***	0.57***	2.61**	1.68	3.09***
[..., 1998Q4]						
0.32***	0.60***	0.67***	0.55***	3.76**	1.26	10.17***
[1999Q1, ...]						
0.32***	0.61***	0.67***	0.55***	4.12**	1.38	11.11***

Notes: W_{β} - Wald test for $\beta^G = \beta^R$. W_{γ} - Wald test for $\gamma^G = \gamma^R$. W_{β} - Wald test for $\beta^G = \beta^R$. W_{joint} - Wald test for $\beta^G = \beta^R \wedge \gamma^G = \gamma^R$. *, **, ***, respectively significant at 10%, 5% and 1%.

5. Conclusion

In this paper, we use the approach developed by Afonso et al. (2008b) to assess long-term fiscal developments for Portugal. We draw on quarterly data and a Three-Stage Least Square method, and recursively estimate the responsiveness and the persistence government spending and revenue within a system of equations.

The results confirm that Portugal's fiscal position has significantly deteriorated over time, reflecting the consecutive budget deficits. This scenario has been driven by the high persistence of government spending. In fact, despite the larger responsiveness of the government revenue, this feature of fiscal policy was not enough to change the path of deterioration in public finances.

From the policy maker's point of view, the empirical findings of this paper pose important challenges for fiscal policy. Indeed, for a country where the persistence of government spending is large it may be difficult for fiscal authorities to act in a timely and temporary manner in order to stabilize the economy.

References

- Afonso, A. (2005). "Fiscal Sustainability: the Unpleasant European Case", *FinanzArchiv*, 61(1), 19-44.
- Afonso, A., and Rault, C. (2007). "What do we really know about fiscal sustainability in the EU? A panel data diagnostic", ECB Working Paper N°. 820.
- Afonso, A., and Sousa, R. M. (2009), "The macroeconomic effects of fiscal policy", ECB Working Paper N°. 991.
- Afonso, A., Agnello, A.; and Furceri, D. (2008a). "Fiscal Policy Responsiveness, Persistence and Discretion", ECB Working Paper N°. 954.
- Afonso, A., Agnello, A.; Furceri, D. and Sousa, R. M. (2008b). "Assessing Long-Term Fiscal Developments: a New Approach", European Central Bank, manuscript.
- Ahmed, S., and Rogers, J. (1995). "Government Budget Deficits and Trade Deficits. Are Present Value Constraints Satisfied in Long-term Data?" *Journal of Monetary Economics* 36, 351-374.
- Baglioni, A., and Cherubini, U. (1993). "Intertemporal Budget Constraint and Public Debt Sustainability: The Case of Italy," *Applied Economics* 25, 275-283.
- Bohn, H. (2007). "Are stationarity and cointegration restrictions really necessary for the intertemporal budget constraint?" *Journal of Monetary Economics*, 54(7), 1837-1847.
- Fatás, A., and Mihov, I. (2003). "The Case for Restricting Fiscal Policy Discretion", *Quarterly Journal of Economics*, 118, 1419-1447.
- Fatás, A., and Mihov, I. (2006). "The Macroeconomics Effects of Fiscal Rules in the US States", *Journal of Public Economics*, 90, 101-117.
- Hamilton, J., and Flavin, M. (1986). "On the Limitations of Government Borrowing: A Framework for Empirical Testing", *American Economic Review* 76, 808-816.

- MacDonald, R. (1992). “Some Tests of the Government’s Intertemporal Budget Constraint Using U.S. Data”, *Applied Economics* 24, 1287-1292.
- Quintos, C. (1995). “Sustainability of the Deficit Process with Structural Shifts”, *Journal of Business & Economic Statistics* 13, 409–417.
- Smith, G., and Zin, S. (1991). “Persistent Deficits and the Market Value of Government Debt,” *Journal of Applied Econometrics* 6, 31–44.
- Trehan, B., and Walsh, C. (1991). “Testing Intertemporal Budget Constraints: Theory and Applications to U.S. Federal Budget and Current Account Deficits”, *Journal of Money, Credit, and Banking* 23, 206–223.
- Zellner, A., and Theil, H. (1962). “Three Stage Least Squares: Simultaneous Estimation of Simultaneous Equations”, *Econometrica*, 30(1), 54-78.

Appendix. Data description and sources

GDP

Data for GDP are quarterly, seasonally adjusted, and comprise the period 1978:1-2007:4. The source is the Bank of Portugal.

Price Deflator

All variables were deflated by the GDP deflator (2000=100). Data are quarterly, seasonally adjusted, and comprise the period 1978:1-2007:4. The source is the Bank of Portugal.

Government Spending

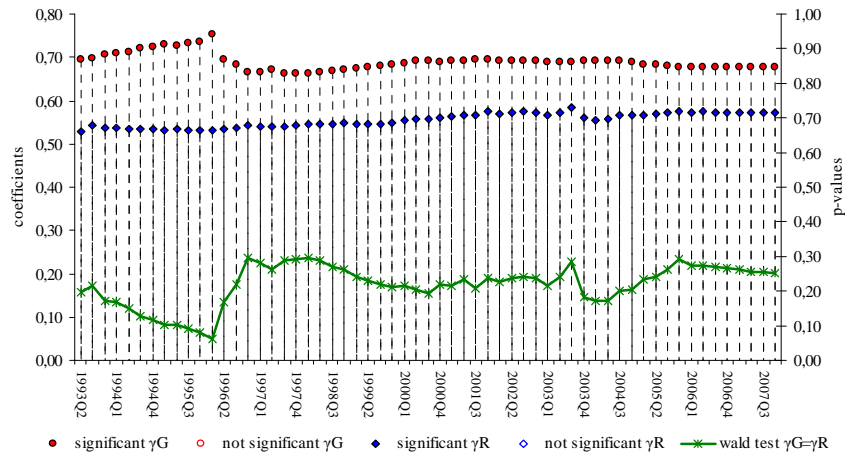
The source is the Bank of Portugal, collected from the Monthly Bulletin of the Directorate-General of Public Accounting. Government Spending is defined as Central Government total authorized spending (on a cash basis). We seasonally adjust quarterly data using Census X12 ARIMA, and the series comprise the period 1978:1-2007:4.

Government Revenue

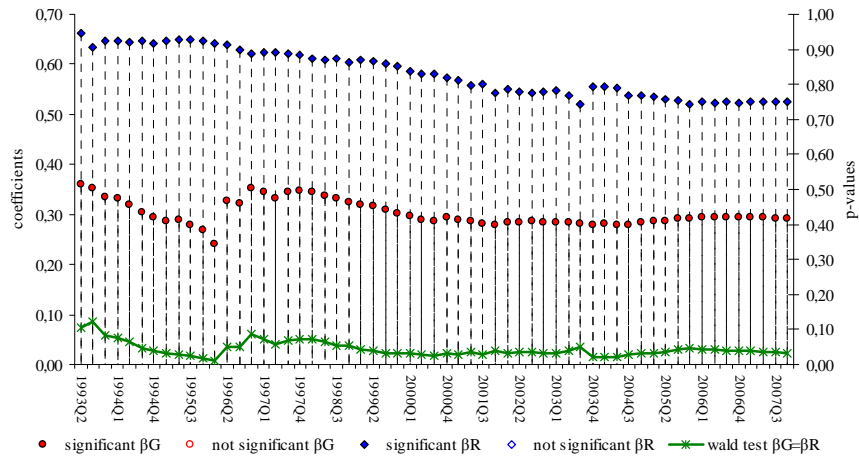
The source is the Bank of Portugal, collected from the Monthly Bulletin of the Directorate-General of Public Accounting. Government Revenue is defined as Central Government total revenue (on a cash basis). We seasonally adjust quarterly data using Census X12 ARIMA, and the series comprise the period 1978:1-2007:4.

Figure 1 – Recursive estimates, Wald tests, and debt and budget balance ratio (1978:1-2007:4).

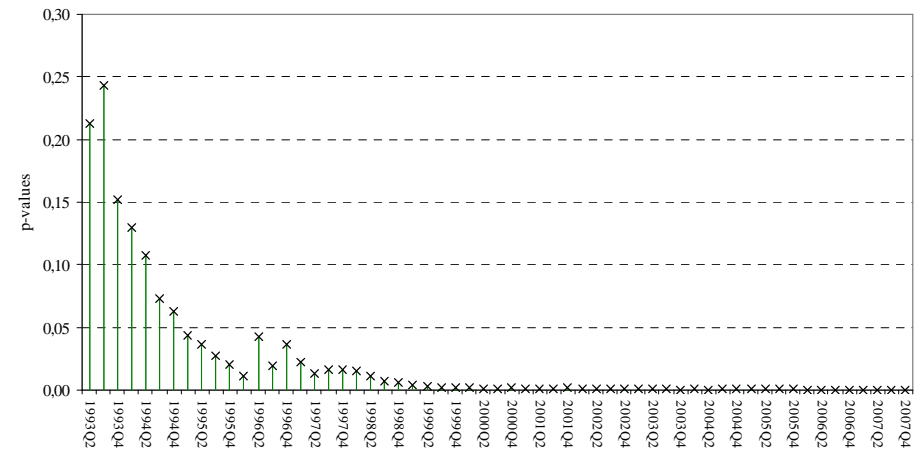
1a – Recursive estimates for γ (significance level of 5%)



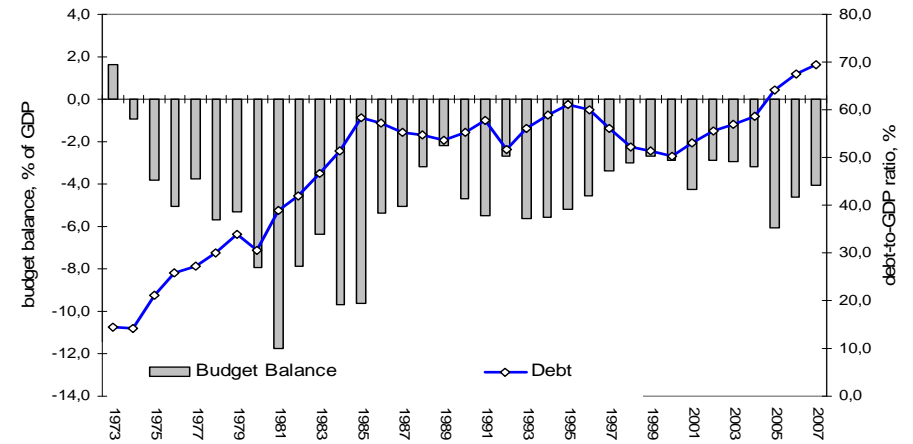
1b - Recursive estimates for β (significance level of 5%)



1c – Joint Wald test $H_0 : \gamma_{ik}^G = \gamma_{ik}^R \wedge \beta_{ik}^G = \beta_{ik}^R$



1d - Debt and budget balance ratio



Source: EC, Ameco database.

Most Recent Working Papers

NIPE WP 1/2009	Afonso, António e Ricardo M. Sousa , " Assessing Long-Term Fiscal Developments: Evidence from Portugal ", 2009
NIPE WP 22/2008	Afonso, António e Ricardo M. Sousa , "The Macroeconomic Effects of Fiscal Policy", 2008
NIPE WP 21/2008	Afonso, António e Ricardo M. Sousa , "Fiscal Policy, Housing and Stock Prices", 2008
NIPE WP 20/2008	Magalhães, Pedro C., Luís Aguiar-Conraria , "Growth, Centrism and Semi-Presidentialism: Forecasting the Portuguese General Elections", 2008
NIPE WP 19/2008	Castro, Vítor , “Are Central Banks following a linear or nonlinear (augmented) Taylor rule?”, 2008
NIPE WP 18/2008	Castro, Vítor , “The duration of economic expansions and recessions: More than duration dependence”, 2008
NIPE WP 17/2008	Holmås, Tor Helge, Egil Kjerstad, Hilde Lurås and Odd Rune Straume , “Does monetary punishment crowd out pro-social motivation? The case of hospital bed-blocking”, 2008.
NIPE WP 16/2008	Alexandre, Fernando, Miguel Portela and Carla Sá , “Admission conditions and graduates’ employability”, 2008.
NIPE WP 15/2008	Alexandre, Fernando, Pedro Bação and Vasco Gabriel , “Taylor-type rules versus optimal policy in a Markov-switching economy”, 2008.
NIPE WP 14/2008	Bastos, Paulo, Natália P. Monteiro and Odd Rune Straume , “Firm heterogeneity and wages in unionised labour markets: Theory and evidence”, 2008.
NIPE WP 13/2008	Esteves, Rosa Branca , “Price Discrimination with Private and Imperfect Information”, 2008.
NIPE WP 12/2008	Esteves, Rosa Branca , “Price Discrimination with Partial Information: Does it pay off?”, 2008.
NIPE WP 11/2008	Ribeiro, José Cadima and José Freitas Santos , “Portuguese quality wine and the region-of-origin effect: consumers’ and retailers’ perceptions”, 2008.
NIPE WP 10/2008	Lommerud, Kjell Erik, Frode Meland and Odd Rune Straume , “Mergers and capital flight in unionised oligopolies: Is there scope for a ‘national champion’ policy?”, 2008.
NIPE WP 9/2008	Gabriel, Vasco J., Paul Levine and Christopher Spencer , "How forward-looking is the Fed? Direct estimates from a ‘Calvo-type’ rule", 2008.
NIPE WP 8/2008	Brekke, Kurt R., Roberto Cellini, Luigi Siciliani and Odd Rune Straume , "Competition and quality in regulated markets: a differential-game approach", 2008.
NIPE WP 7/2008	Neto, Delfim Gomes, and Francisco José Veiga , “Financial globalization, convergence and growth”, 2008.
NIPE WP 6/2008	Brekke, Kurt R., Luigi Siciliani and Odd Rune Straume , "Hospital competition and quality with regulated prices", 2008.
NIPE WP 5/2008	Aguiar-Conraria, Luís, and Pedro C. Magalhães , "Referendum Design, Quorum Rules and Turnout", 2008.
NIPE WP 4/2008	Silva, João Cerejeira , “Young Employment, Job-Skill Composition and Minimum Wages: Evidence from a ‘Natural Experiment’ ”, 2008.
NIPE WP 3/2008	Amado, Cristina, and Timo Teräsvirta , "Modelling Conditional and Unconditional Heteroskedasticity with Smoothly Time-Varying Structure", 2008.
NIPE WP 2/2008	Buhai, Sebastian, Miguel Portela, Coen Teulings and Aico van Vuuren , "Returns to Tenure or Seniority?", 2008.
NIPE WP 1/2008	Brekke, Kurt R., Tor Helge Holmås and Odd Rune Straume , "Regulation, generic competition and pharmaceutical prices: Theory and evidence from a natural experiment", 2008.